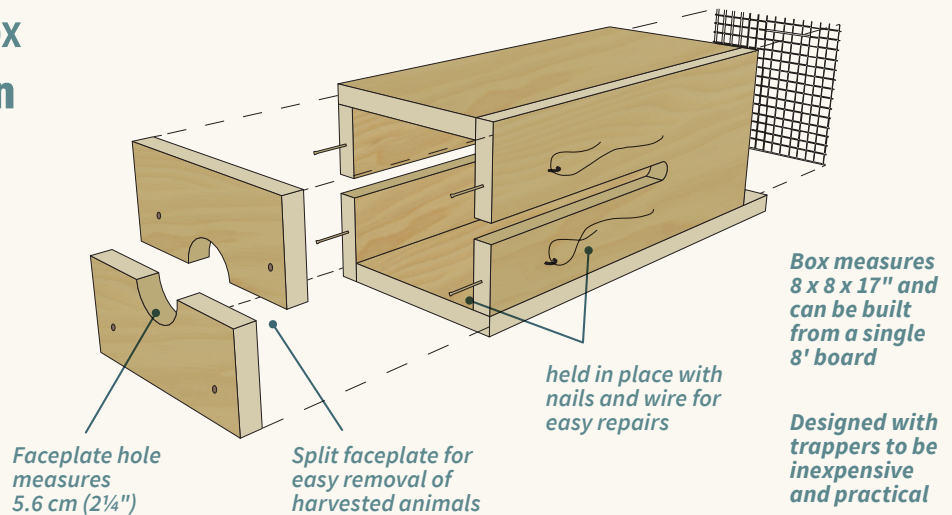


# The Fisher Exclusion Box

The fisher exclusion box is an elongated **marten cubby** fitted with a faceplate that is sized to **prevent fishers from getting in** and becoming bycatch.



## How does it work?

Almost all fishers have cheekbones wider than 5.6 cm and almost all martens have cheekbones narrower than 5.6 cm.

**This difference allows martens to enter the trap but keeps fishers out.**



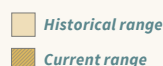
## Will your marten harvest be impacted?

**No!** Over 1800 trap nights and remote camera footage from a pilot study in the Northeast and Cariboo regions confirmed that **martens easily entered the modified box** and were successfully harvested. We even heard from one trapper who caught his **largest marten in 40 years in one of these boxes!**

## Why use it?

Fishers in the Central Interior are designated as **endangered**, and in Northeastern BC they are a population of **special concern**. This is primarily due to habitat loss, but trapping can also have an impact.

Beginning in 2021, the commercial trapping seasons for fisher will be closing in areas where they are endangered. To assist recovery efforts, we need your help to reduce accidental capture of fishers.



**For more information, email [Fisher.Conservation@gov.bc.ca](mailto:Fisher.Conservation@gov.bc.ca)**

# The Fisher Exclusion Box — Specifications and Assembly

Experienced trappers helped us design a box that meets trappers needs, is relatively inexpensive, is based on animal biology, and meets the principals of humane trapping. Should you decide to modify your box, there are key features that cannot be altered:

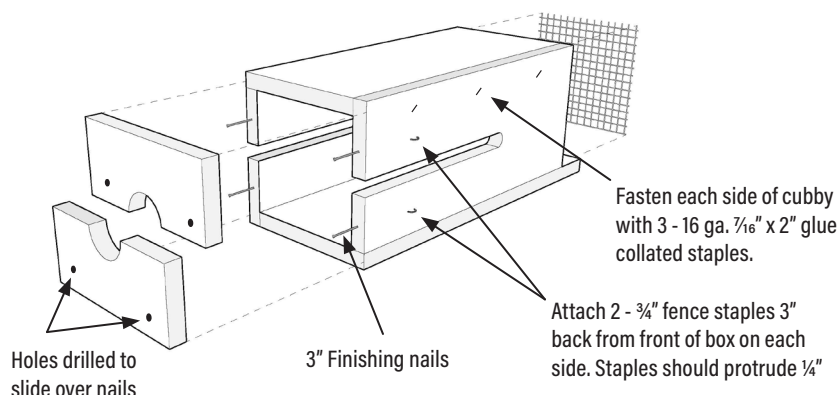
- » **Box length must be 17"** to allow a proper approach by a marten to the trap.
- » **Side slot length must be 10"** to allow trap to be set far enough from the door for proper approach, but not so deep that a marten can use its paw to reach the bait.
- » **Faceplate hole must be 2 1/4"** to keep fishers out of the trap. Ensure any modifications do not allow plates to be removed or shifted by animals and increase the door opening size.

## Try the Fisher Exclusion Box free!

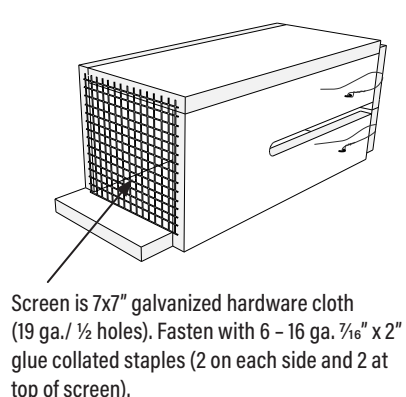
Starting October 9, 2021, a limited number of boxes will be available for pickup at the Omineca, Peace, Cariboo, Thompson-Nicola, and Skeena FLNRORD offices. Each trapper can have 10 boxes, free of charge.

For more information on the program, to arrange for pickup, or to share your thoughts on the design, please email [fisher.conservation@gov.bc.ca](mailto:fisher.conservation@gov.bc.ca)

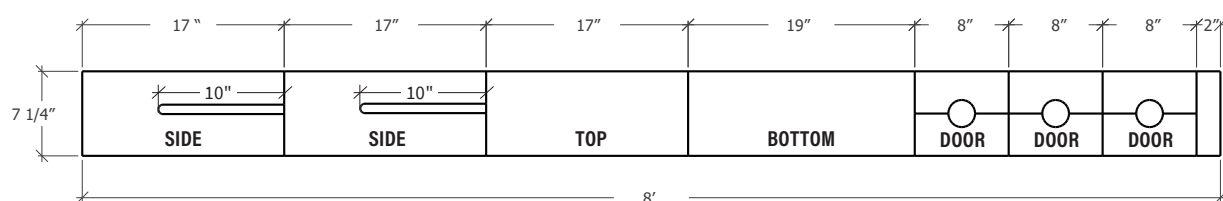
### FRONT VIEW



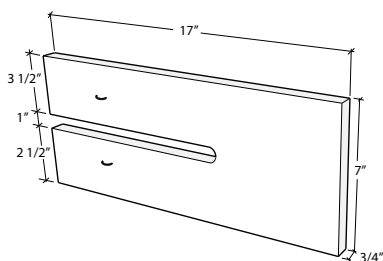
### BACK VIEW



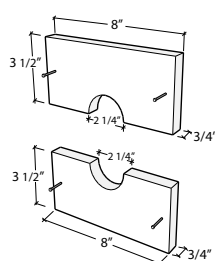
### EXAMPLE CUT PLAN FROM A SINGLE 1 X 8 X 8



### SIDE DETAILS



### FACEPLATE DETAILS



### Notes:

- (1) We recommend making some extra doors to replace any damaged by animal chewing but an 8' board can also yield an additional 17" side when building multiple boxes.
- (2) Doors are held in place with 12" long pieces of 16 ga. wire that can be inexpensively replaced.
- (3) Install faceplates to fit tightly together by drilling holes in plates and then installing nails through the plates so that they stay tightly together.

Download a copy of the engineering drawings at [www.gov.bc.ca/trapping](http://www.gov.bc.ca/trapping)



Ministry of  
Forests, Lands, Natural  
Resource Operations  
and Rural Development



Ministry of  
Environment and  
Climate Change Strategy